

Annual Report: Tara

Social and economic changes in Queensland's gasfield communities in 2020



Research Project:

**Cumulative social and economic impacts
of CSG development in the Western Downs**

DATA REPORT

*INDICATORS OF CHANGE
IN
TARA AND DISTRICT COMMUNITY*

Statistical data updated in June 2021

Contact:

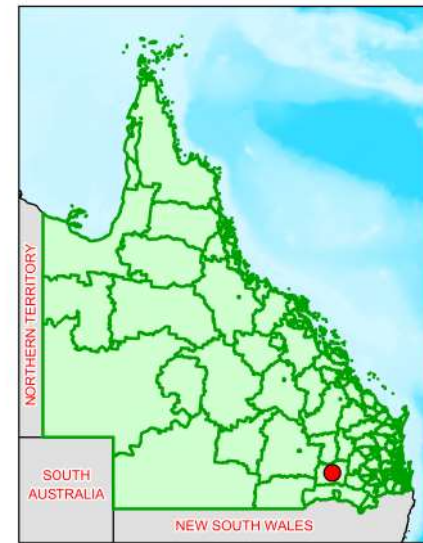
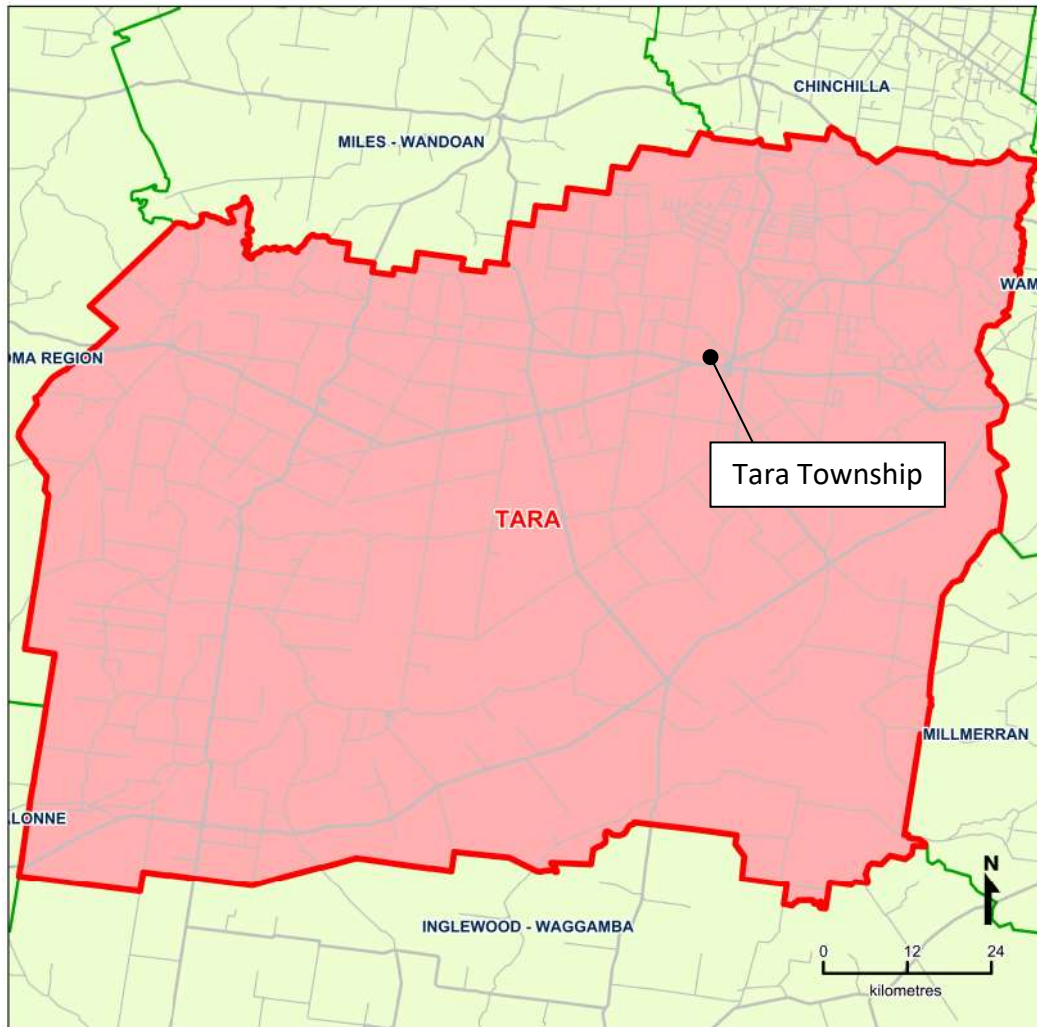
**The University of Queensland, Dr Katherine Witt | Research Fellow
Centre for Natural Gas**

The University of Queensland | Brisbane, QLD, 4072 AUSTRALIA

M: +61 (0) 418 619 341 | E: k.witt@uq.edu.au

W: www.cng.uq.edu.au

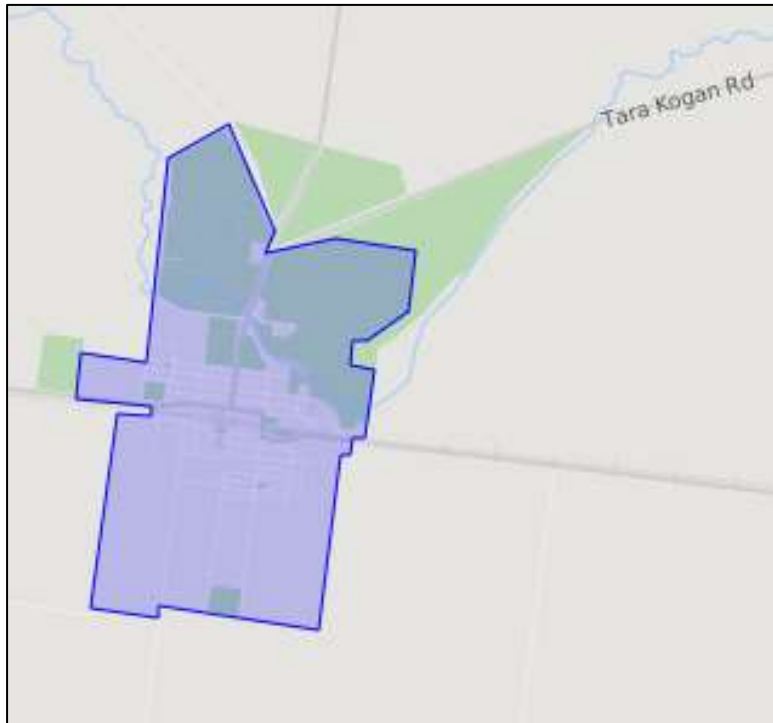
Queensland Statistical Areas, Level 2 (SA2), 2011 - Tara (ASGS Code 307011178)



Map produced by Office of Economic and Statistical Research, Queensland Treasury (www.oesr.qld.gov.au/maps). Data sourced from Australian Bureau of Statistics, Australian Statistical Geography Standard (ASGS), 2011 (cat. no. 1270.0.55.001) Queensland Government, State Digital Road Network (SDRN)
© The State of Queensland (Queensland Treasury) 2011

Tara statistical area 2 (SA2) boundary

Source: <http://www.qgso.qld.gov.au/products/maps/qld-sa2-asgs-2016/>



Tara urban centre and locality (UCL) boundary

Source:

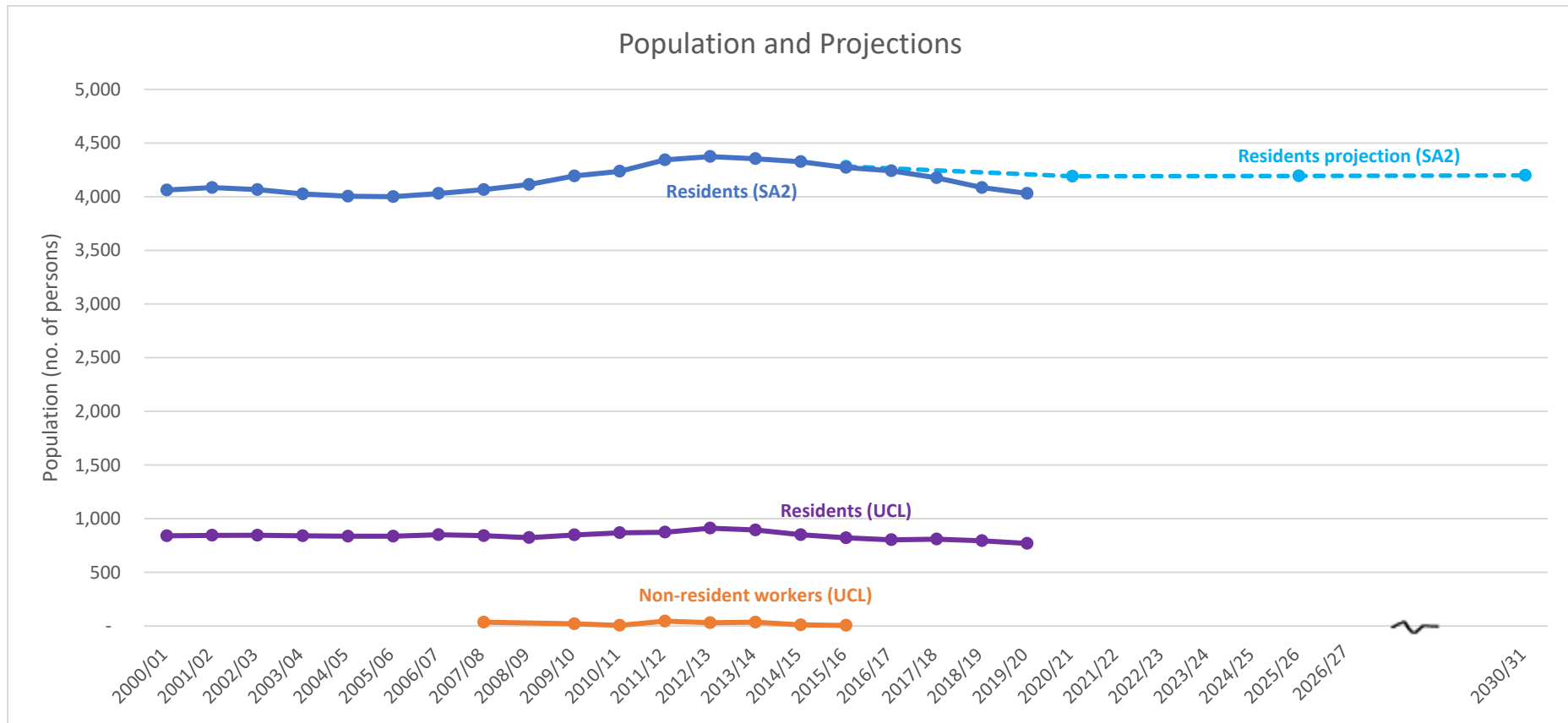
http://www.censusdata.abs.gov.au/census_services/getproduct/census/2011/quickstat/UCL321104?opendocument&navpos=220



Tara postcode boundary 4421

Source: <https://www.google.com.au/maps/place/Tara+QLD+4421/@-27.2279563,150.3680239,10z/data=!4m5!3m4!1s0x6bbc4b4089346037:0x1c00eef4d30914f0!8m2!3d-27.0745513!4d150.5175918>

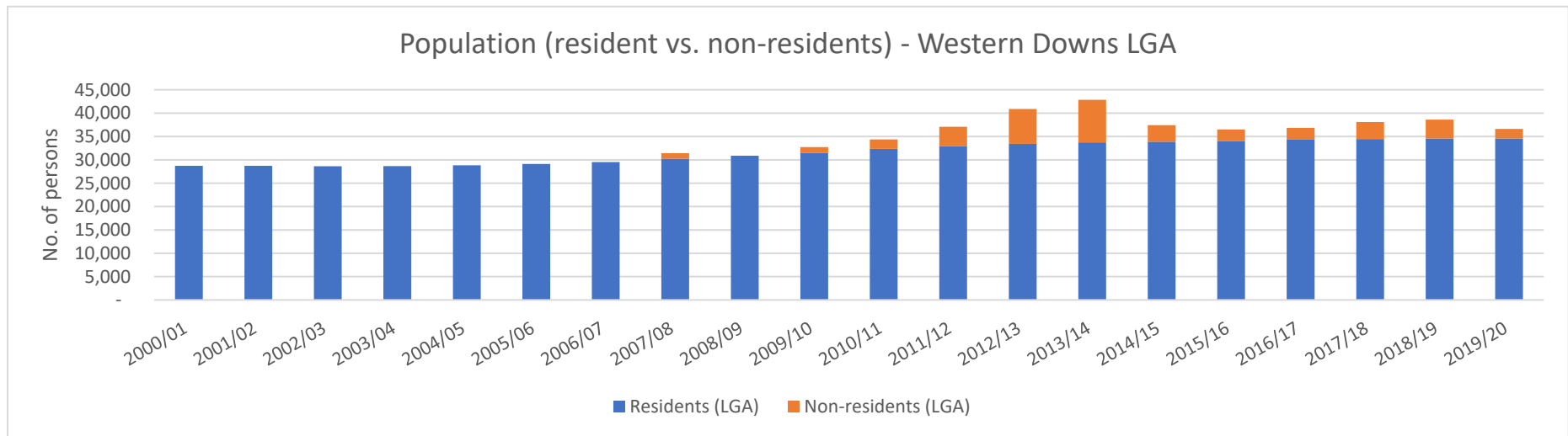
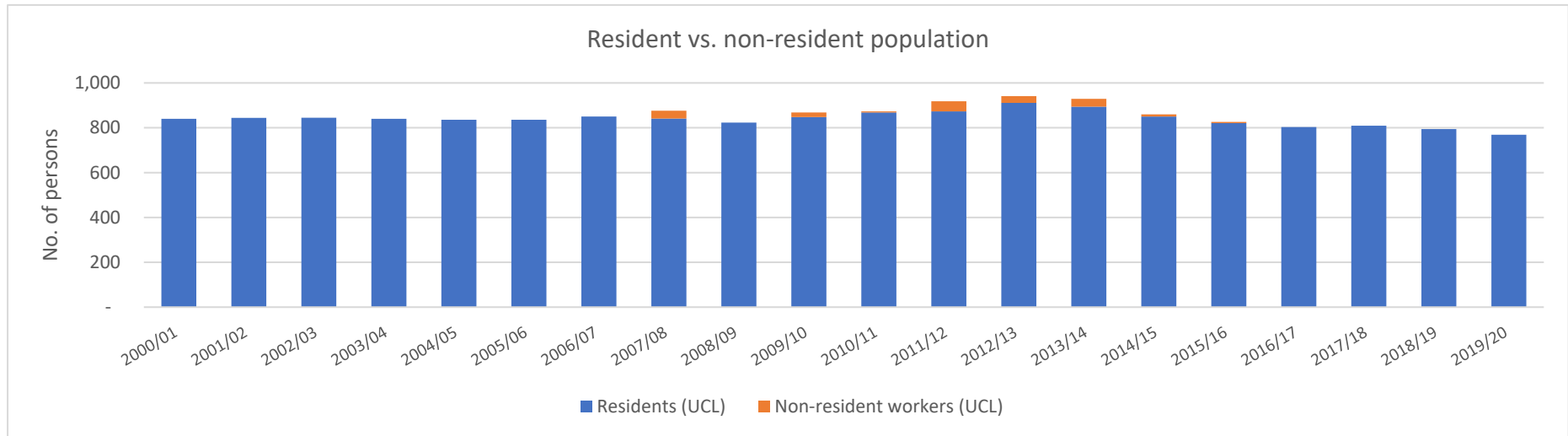
UQ Research Project: Cumulative social and economic impacts of CSG development in Western Downs



Data notes

- UCL non-resident workers population estimate from QGSO 'Surat Basin Population Report' (ASGC 2016); 2020 version available here: <https://www.qgso.qld.gov.au/statistics/theme/population/non-resident-population-queensland-resource-regions/surat-basin>
- UCL resident population estimate from the QGSO table 'Estimated resident population (a) by urban centre and locality (b), Queensland, 2006 to 2016pr' (ASGS 2016), <http://www.qgso.qld.gov.au/products/tables/erp-ucl-qld/index.php>
- SA2 population estimate from the QGSO table 'Estimated resident population by statistical area level 2 (SA2), Queensland, 2006 to 2016pr' (ASGS 2016), <http://www.qgso.qld.gov.au/subjects/demography/population-estimates/tables/erp-sa2-qld/index.php>
- Population projection (2019 edition) from QGSO table 'Projected population (medium series), by statistical area level 2 (SA2), SA3 and SA4, Queensland, 2011 to 2041' (ASGC 2001), <http://www.qgso.qld.gov.au/subjects/demography/population-projections/tables/proj-pop-medium-series-sa2-sa3-sa4-qld/index.php>

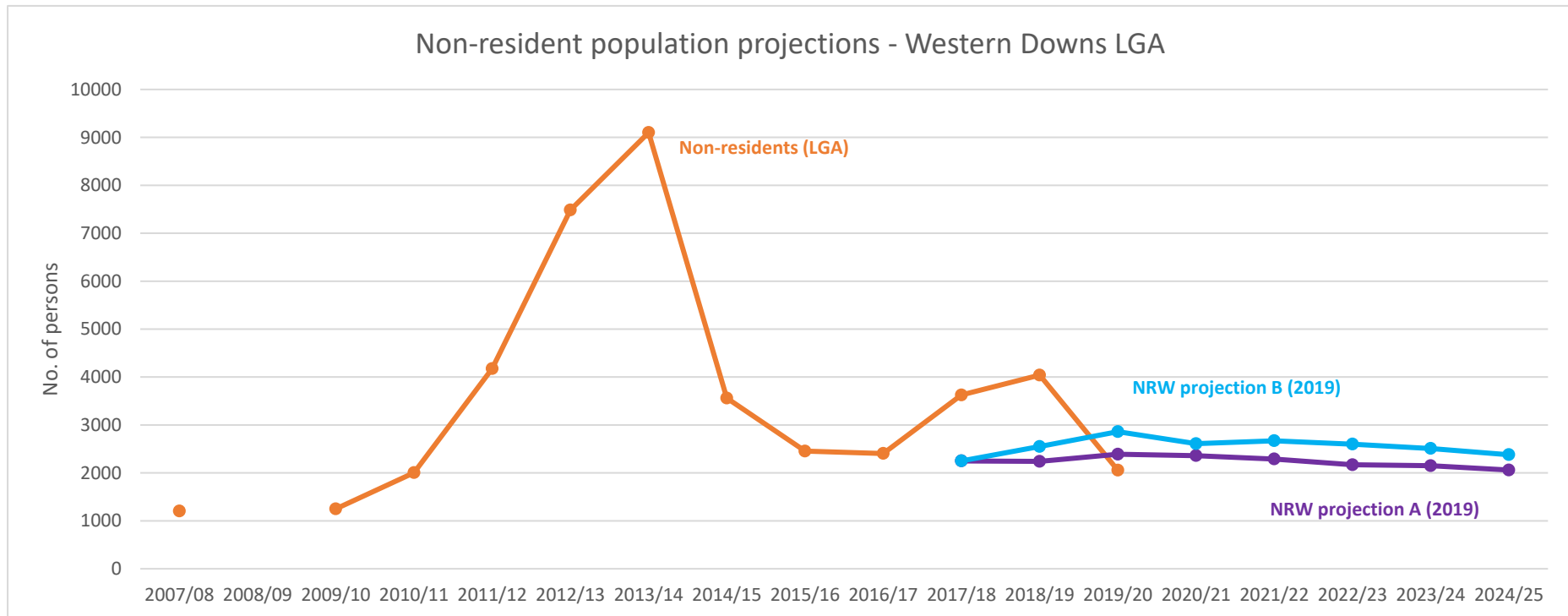
UQ Research Project: Cumulative social and economic impacts of CSG development in Western Downs



Data notes

- Population and non-resident worker population estimates for UCL and Western Downs LGA from the QGSO 'Surat Basin Population Report' (ASGC 2016); 2020 version available here: <https://www.qgso.qld.gov.au/statistics/theme/population/non-resident-population-queensland-resource-regions/surat-basin>
- Data missing for 2008/09 non-resident worker population

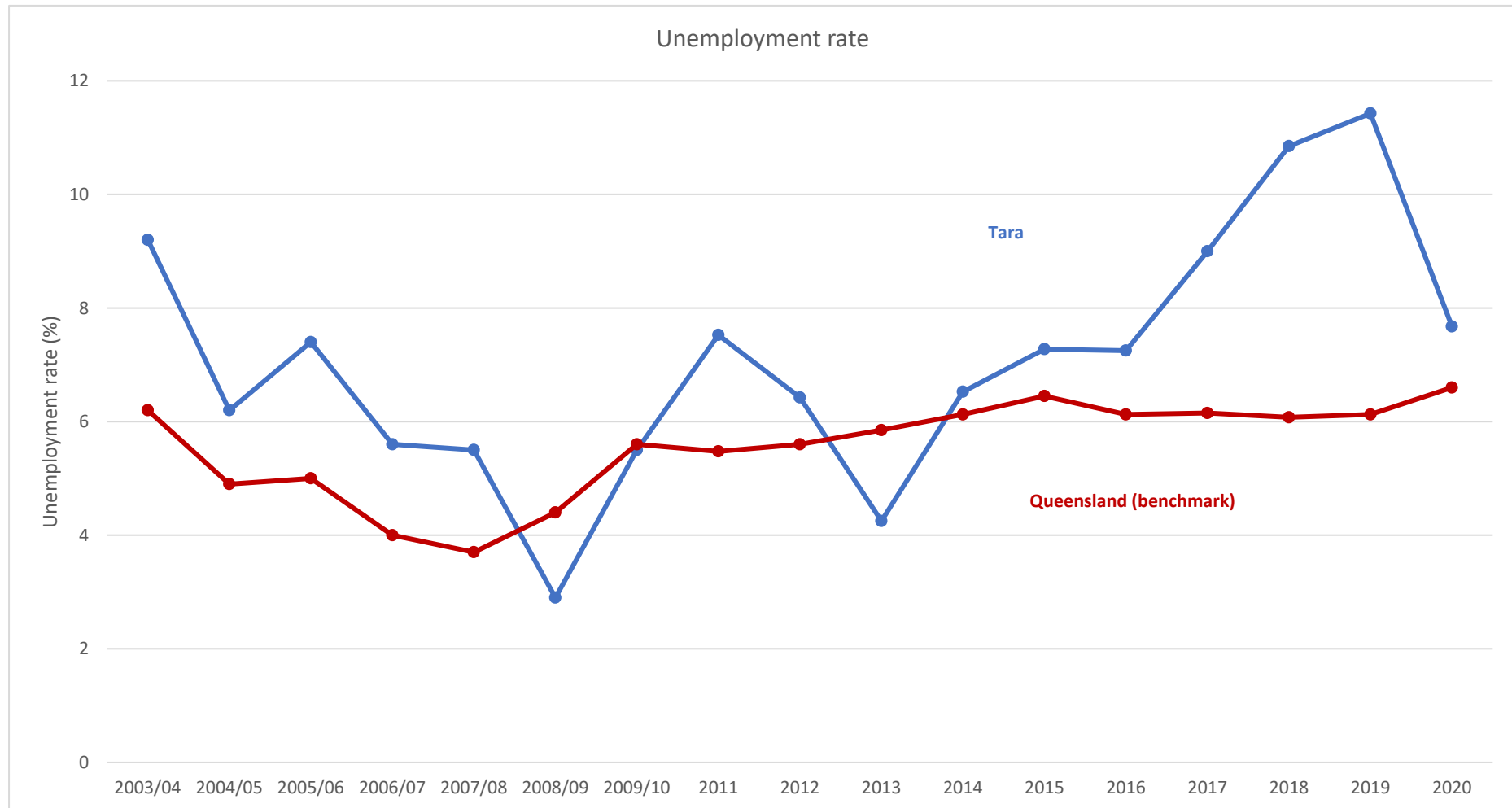
UQ Research Project: Cumulative social and economic impacts of CSG development in Western Downs



Data notes

- Non-resident population, Queensland resource regions: Surat Basin: <https://www.qgso.qld.gov.au/statistics/theme/population/non-resident-population-queensland-resource-regions/surat-basin>
- Non-resident workers projections (2018) by LGA from QGSO report 'Surat Basin non-resident population projections: 2019 to 2025', <https://www.qgso.qld.gov.au/statistics/theme/population/non-resident-population-queensland-resource-regions/surat-basin>
- Series A projection is based on the number of non-resident workers on-shift who were engaged in existing resource operations and associated infrastructure activities in the area at June 2019. The projection takes into account future changes to those operational workforces as advised by resource company sources, as well as the estimated construction and operational workforces of Category A projects (i.e. those that are approved and have reached a financial close).
- Series B projection includes the Series A projection plus projected growth in the non-resident population arising from Category B projects (those that are approved but have yet to reach a financial close).
- Series A projection is based on the number of non-resident workers on-shift who were engaged in existing resource operations and associated infrastructure activities in the area at June 2014. The projection takes into account future changes to those operational workforces as advised by resource company sources, as well as the estimated construction and operational workforces of Category A projects (i.e. those that are approved and have reached a financial close).
- Series B projection includes the Series A projection plus projected growth in the non-resident population arising from Category B projects (those that are approved but have yet to reach a financial close).

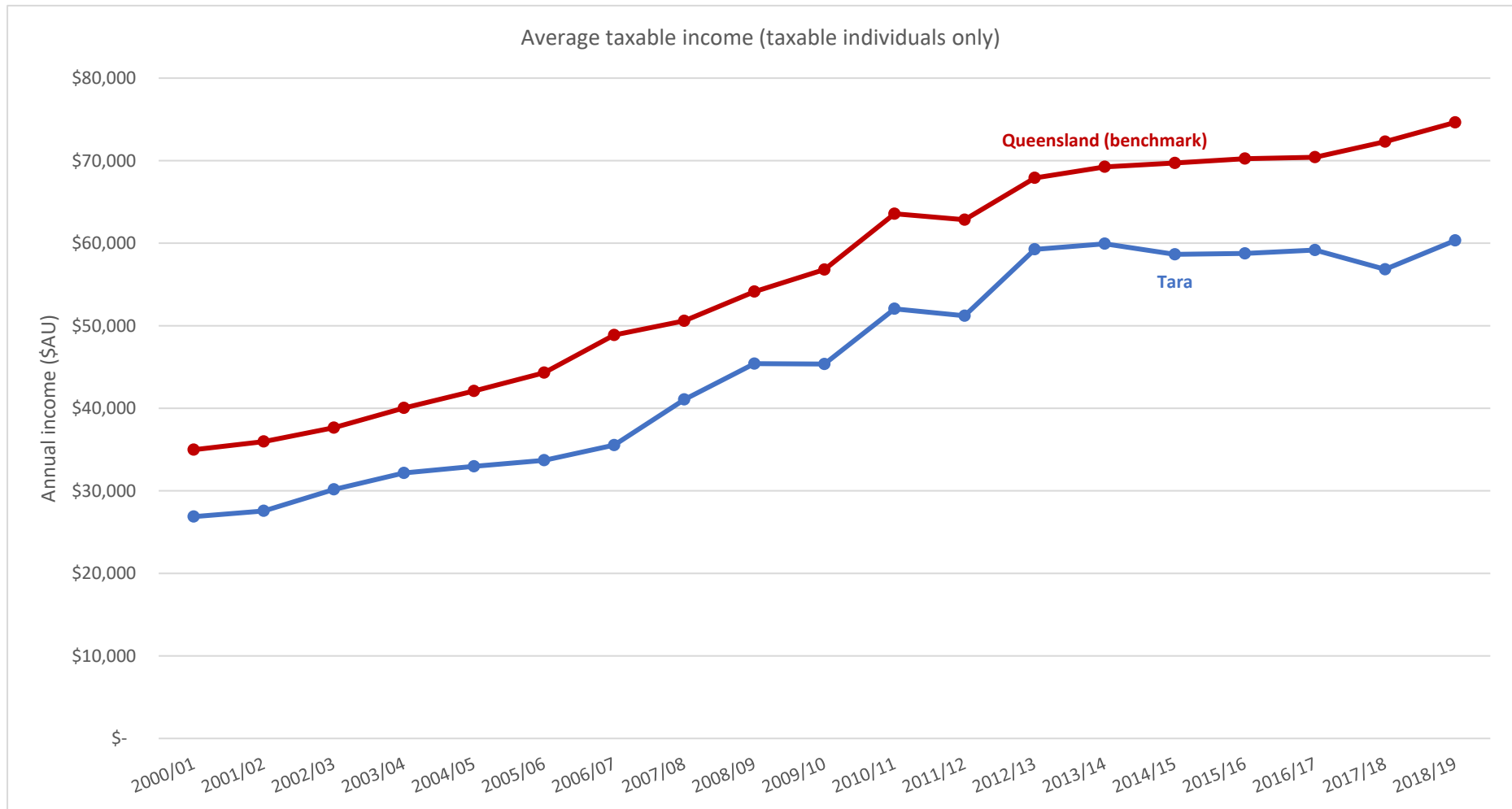
UQ Research Project: Cumulative social and economic impacts of CSG development in Western Downs



Data notes

- 2004-2008 based on SLA statistical boundary; Source: QGSO Regional Database Archived dataset 'Labour Force - Small Area (Qtr Ended 31 Dec 2002 to Qtr Ended 31 Dec 2008) [DEEWR, Small Area Labour Markets Australia] (ASGC 2001)', <http://www.qgso.qld.gov.au/products/tables/qld-regional-database/index.php>
- 2009-2010 data from DEEWR file 'Unemployment salm_data_files_2008-2013'
- 2010-2020 based on SA2 statistical boundary; Source: QGSO Regional Database dataset 'Labour Force - Small Area (Qtr Ended 31 Dec 2010 to Qtr Ended 31 Dec 2020) [Department of Jobs and Small Business] (ASGS 2016)', <http://www.qgso.qld.gov.au/products/tables/qld-regional-database/index.php>

UQ Research Project: Cumulative social and economic impacts of CSG development in Western Downs



Data notes

- Source: Australian Taxation Office (ATO), Research and Statistics, <https://www.ato.gov.au/>
- Average taxable incomes reported by ATO until 2009 excluded losses. Averages from 2010 include all taxable incomes including incomes of zero and losses.
- Data relates to Tara postcode 4421
- Original data – no discounting applied
- Due to ATO data publishing cycles, 2019/20 data will be included in the 2021 Tara booklet

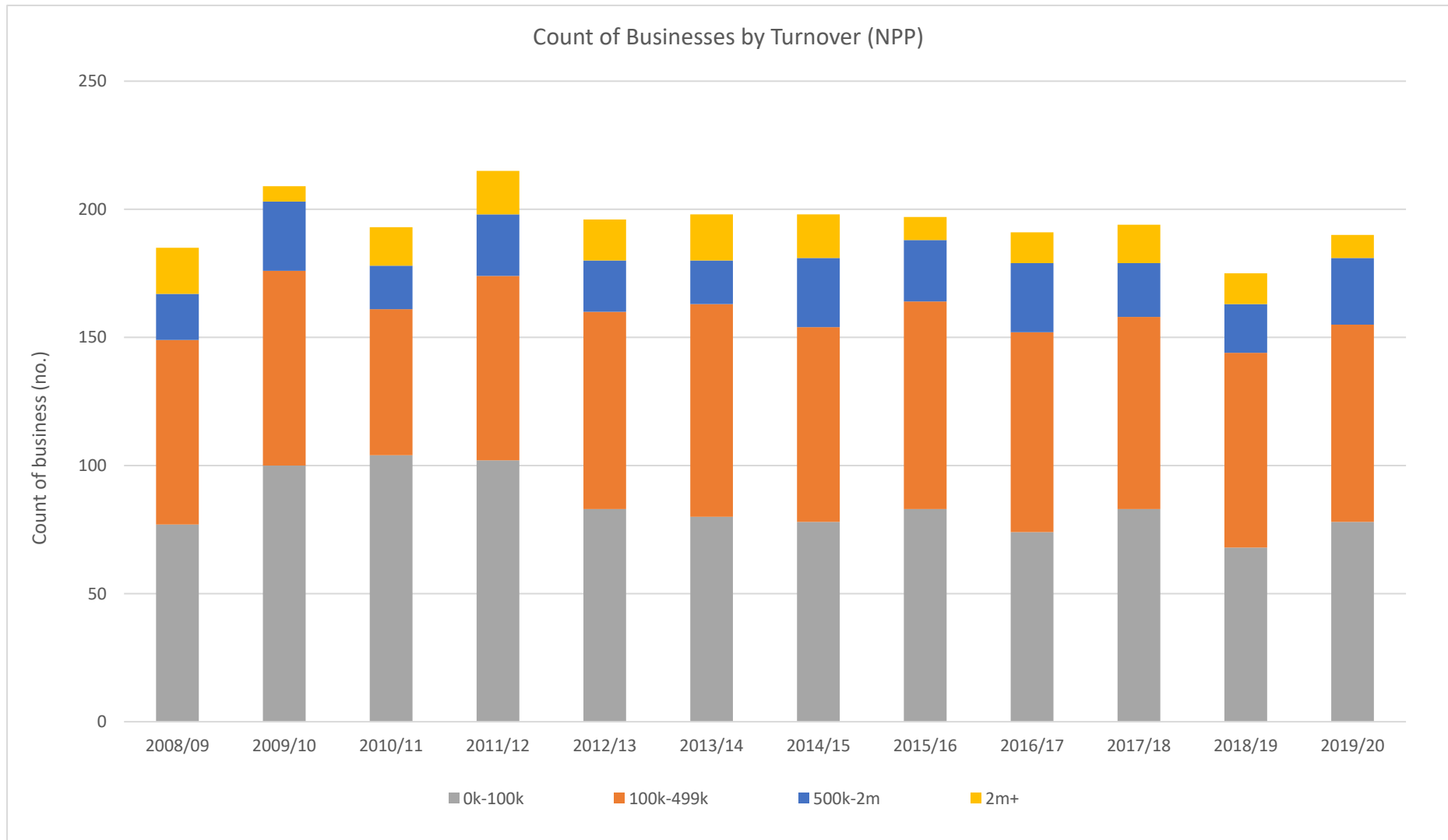
UQ Research Project: Cumulative social and economic impacts of CSG development in Western Downs



Data notes

- Source: Australian Taxation Office (ATO), Research and Statistics, <https://www.ato.gov.au/>
- Data relates to Tara postcode 4421
- Original data – no discounting applied
- Due to ATO data publishing cycles, 2019/20 data will be included in the 2021 Tara booklet

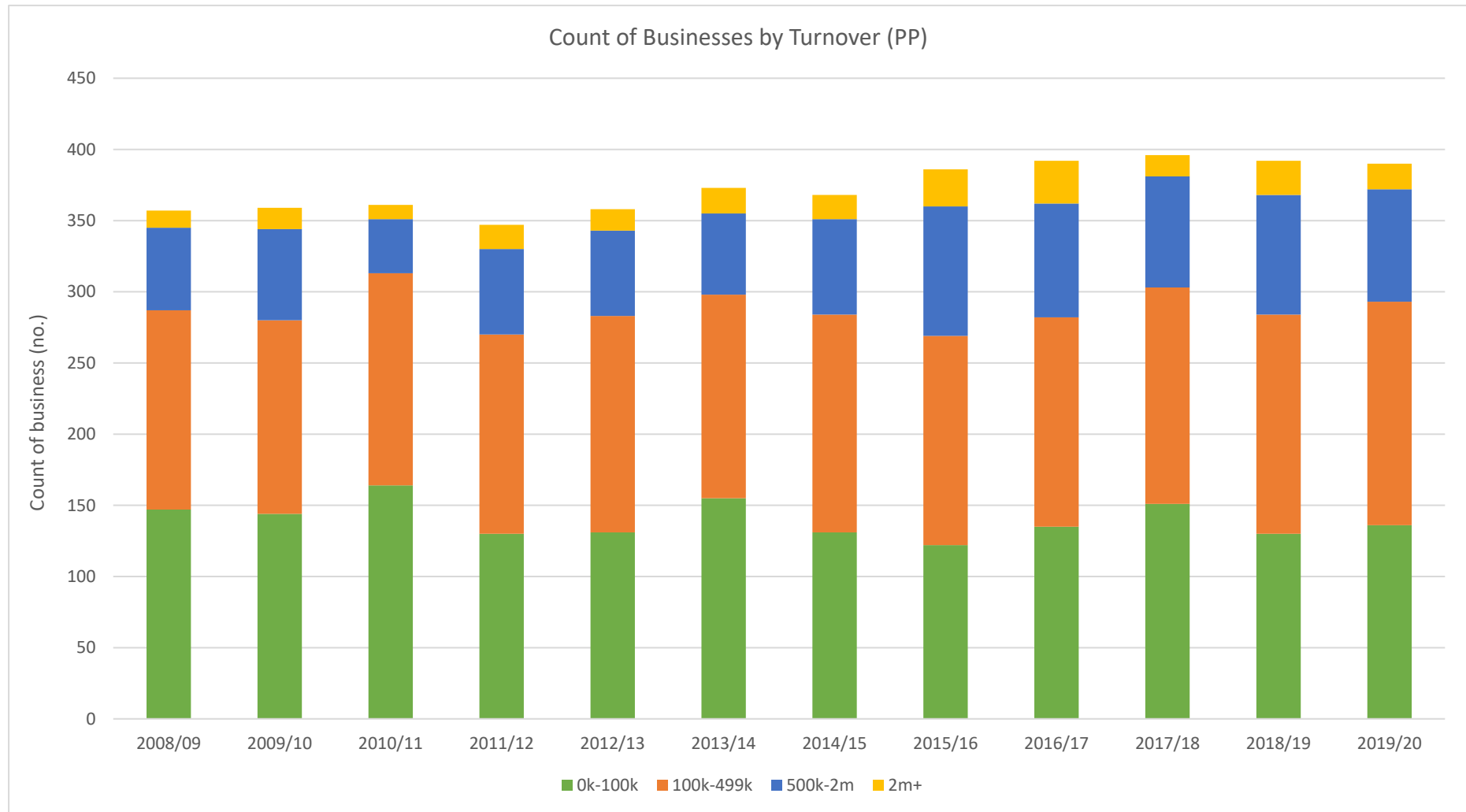
UQ Research Project: Cumulative social and economic impacts of CSG development in Western Downs



Data notes

- Source: Australian Bureau of Statistics, Cat. 8165, <https://www.abs.gov.au/>
- Data based on SA2 (Tara) statistical boundary

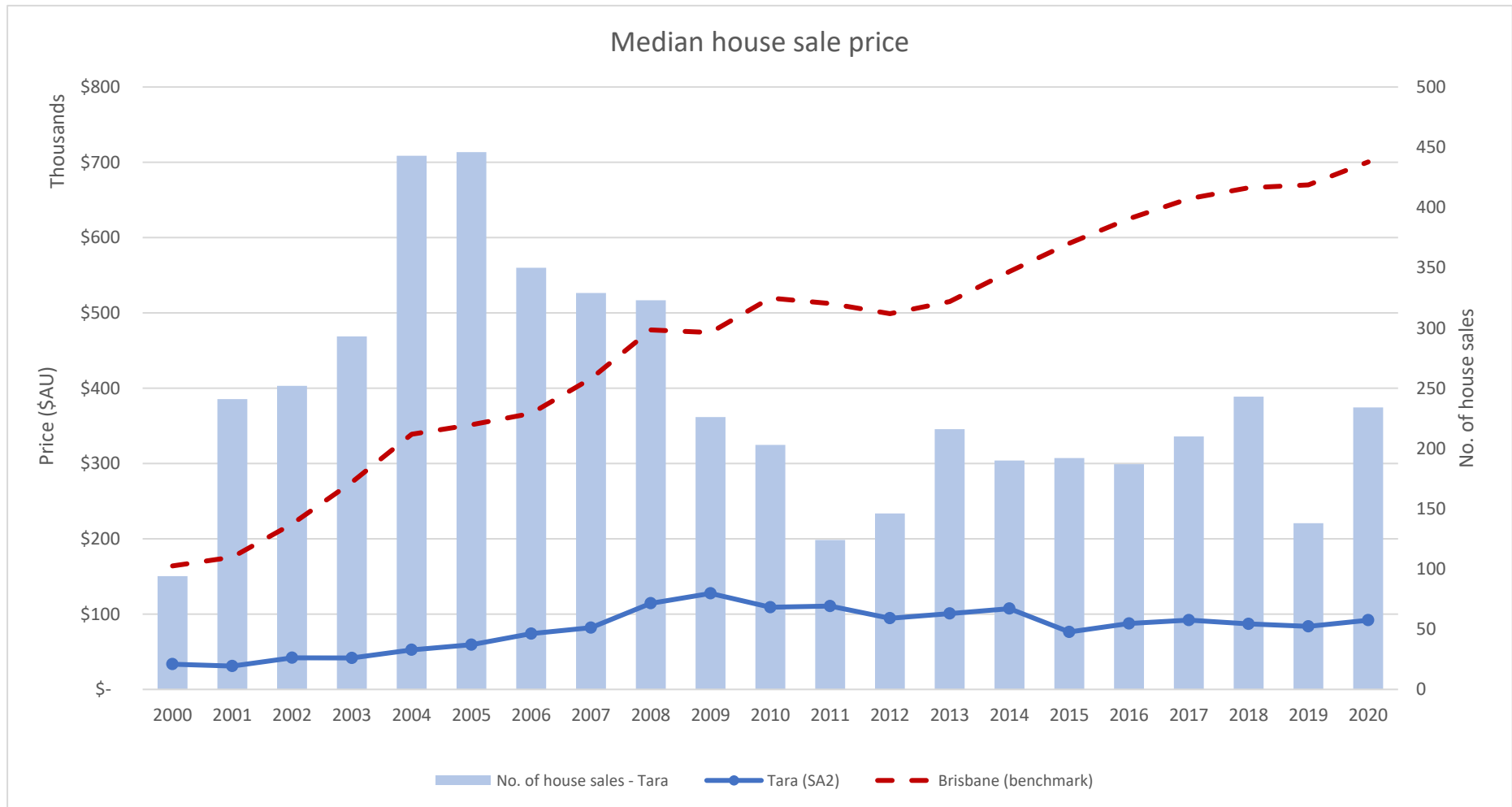
UQ Research Project: Cumulative social and economic impacts of CSG development in Western Downs



Data notes

- Source: Australian Bureau of Statistics, Cat. 8165, <https://www.abs.gov.au/>
- Data based on SA2 (Tara) statistical boundary

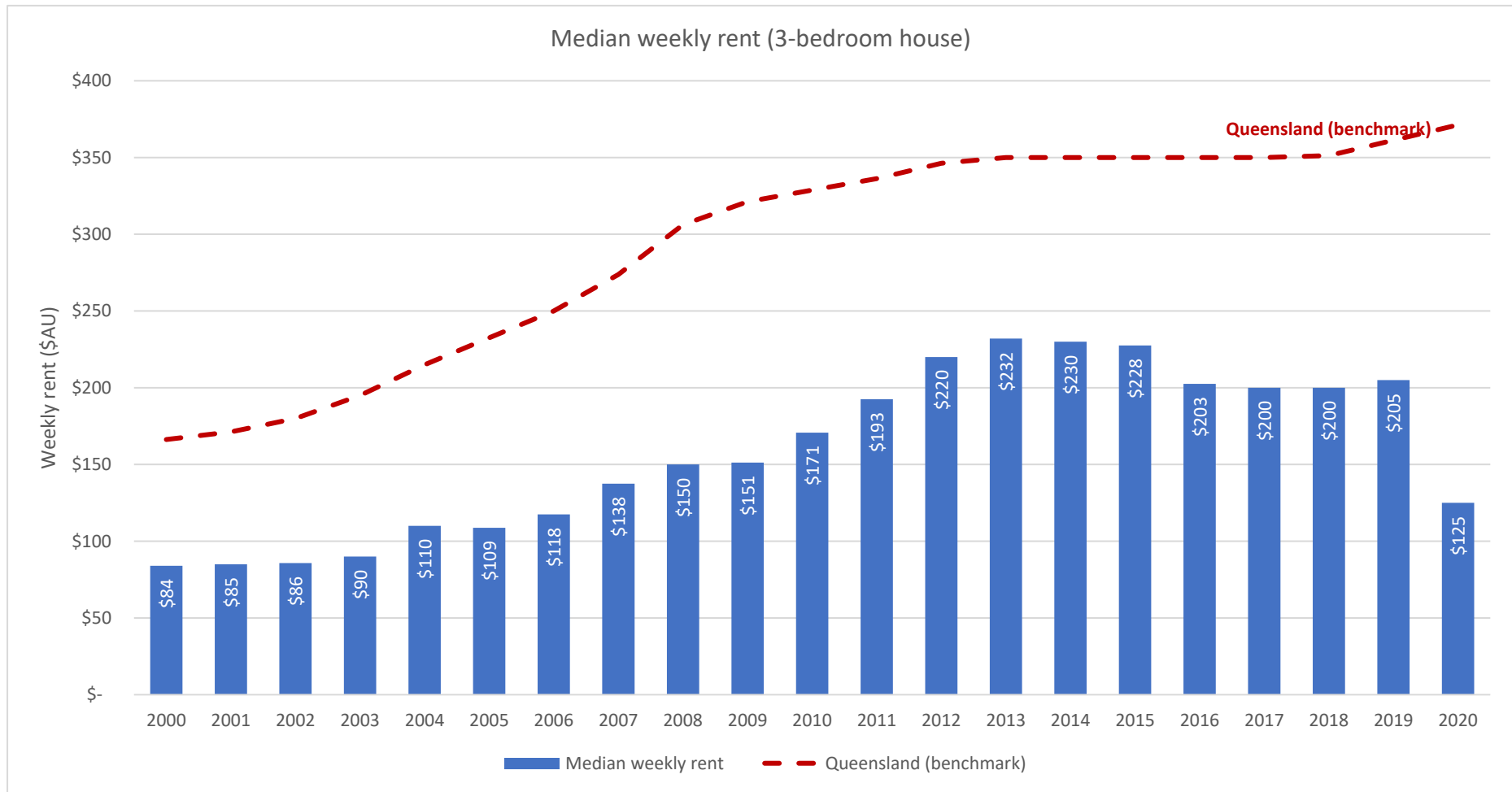
UQ Research Project: Cumulative social and economic impacts of CSG development in Western Downs



Data notes

- Source: QGSO Regional Database dataset 'Residential land and dwelling sales (Year Ended 30 Sep 2000 to Year Ended 31 Dec 2020) [DNRM] (ASGS 2016)', <http://www.qgso.qld.gov.au/products/tables/qld-regional-database/index.php>
- Median house sale price and house sales based on SA2 statistical boundary

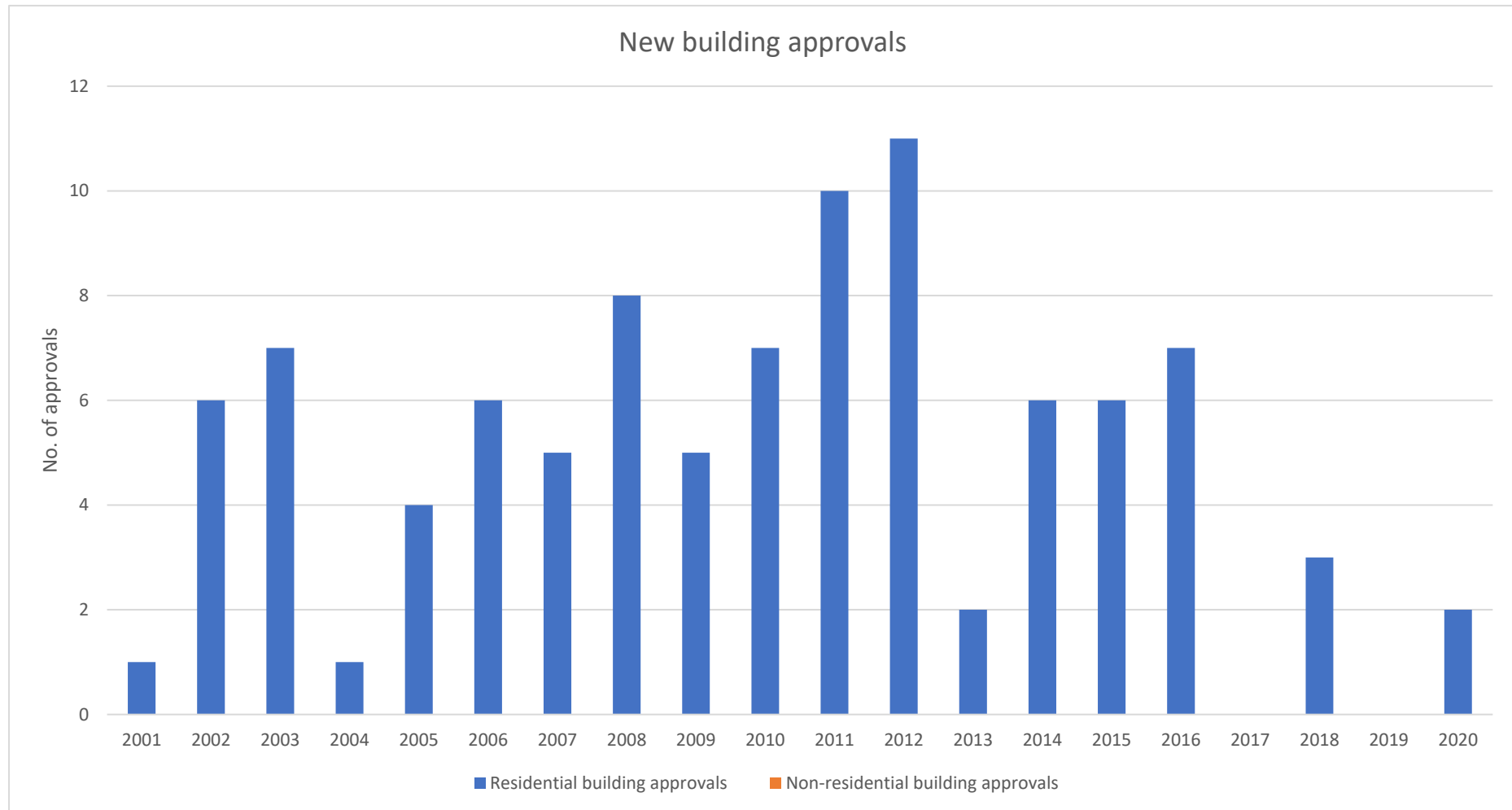
UQ Research Project: Cumulative social and economic impacts of CSG development in Western Downs



Data notes

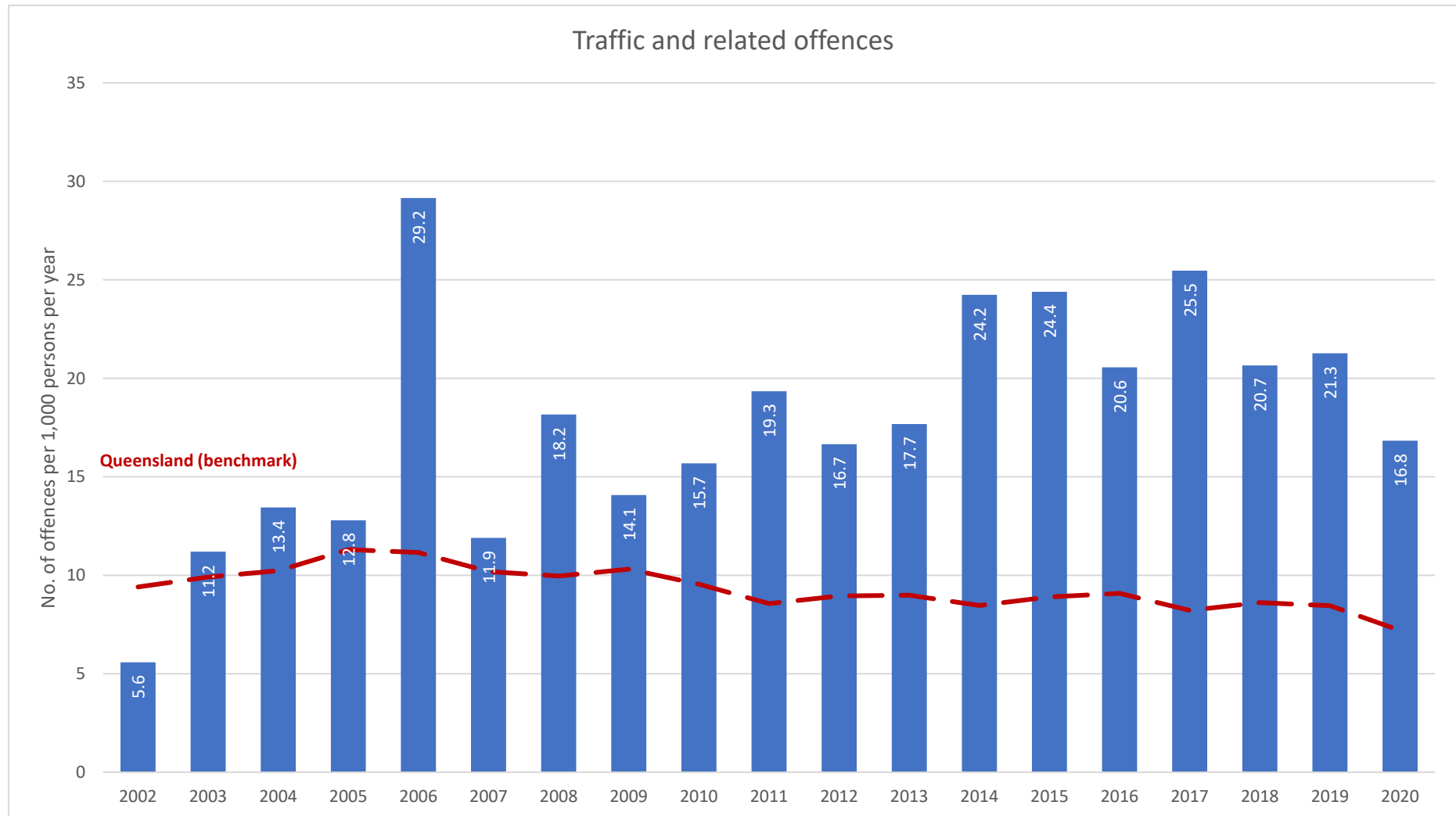
- Source: QGSO Regional Database dataset 'Median rent (Year Ended 30 Sep 1990 to Year Ended 31 Dec 2020) [RTA] (ASGS 2016)', <http://www.ggso.qld.gov.au/products/tables/qld-regional-database/index.php>
- Rent value data based on SA2 statistical boundary

UQ Research Project: Cumulative social and economic impacts of CSG development in Western Downs



Data notes

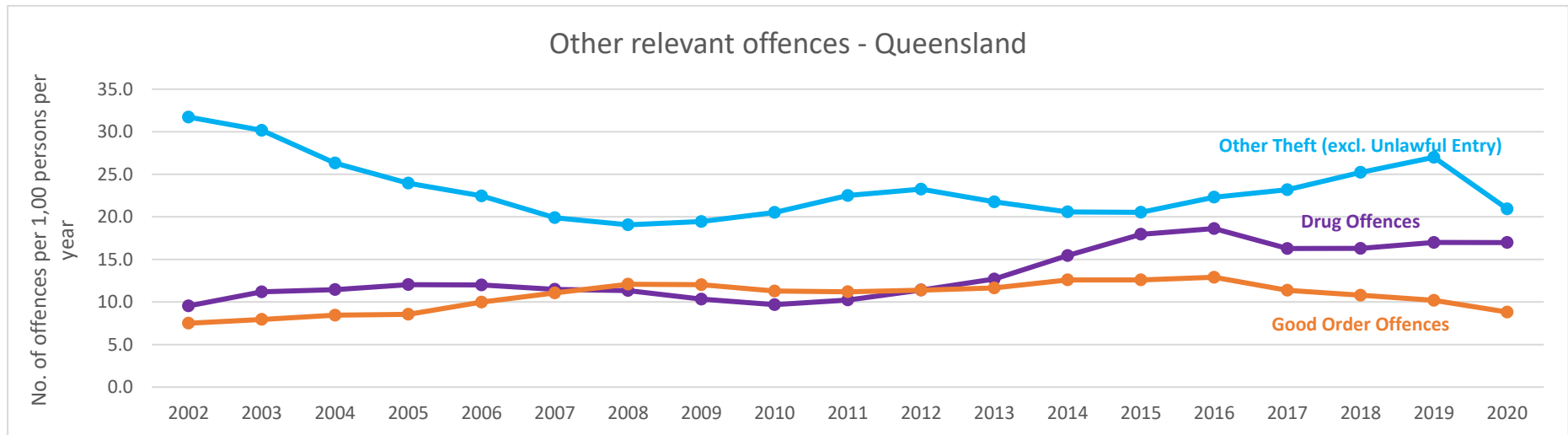
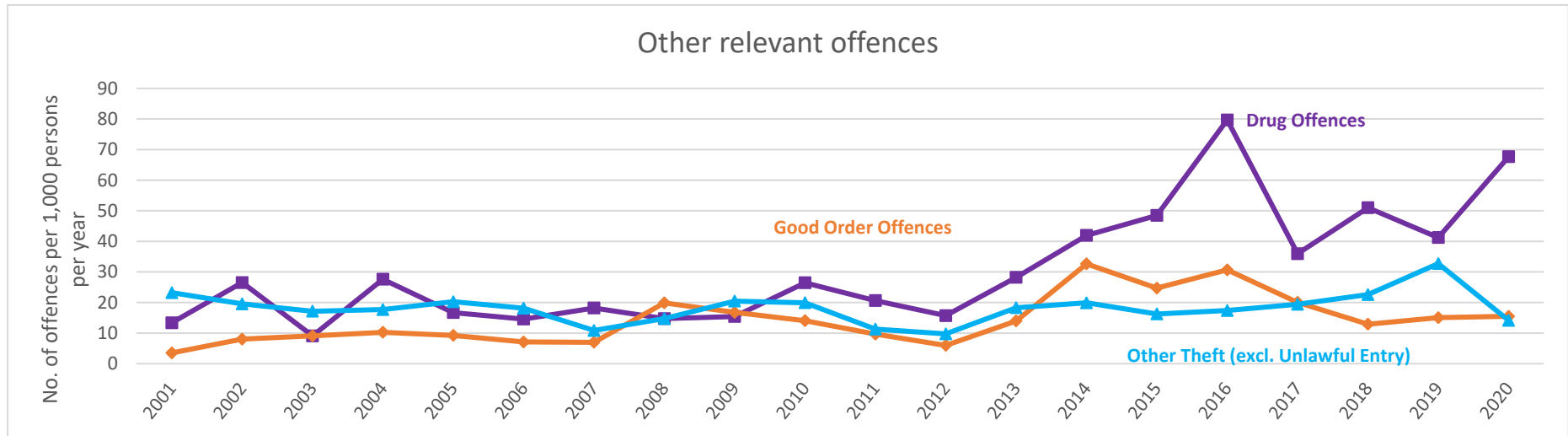
- Source: QGSO Regional Database dataset 'Building Approvals (Jul 2001 to Dec 2020) [ABS 8731.0] (ASGS 2016)', <http://www.qgso.qld.gov.au/products/tables/qld-regional-database/index.php>
- Data based on SA2 statistical boundary
- Approvals shown for private buildings only; public developments are excluded
- Private non-residential building approvals remained at zero between 2002 and 2020



Data notes

- Source: Queensland Police Service (QPS), <https://www.police.qld.gov.au/online/data/>
- Crime rate data (per 100,000 people) obtained by QPS Division and Queensland State; data was adjusted to be presented as number of offences per 1,000 people per year

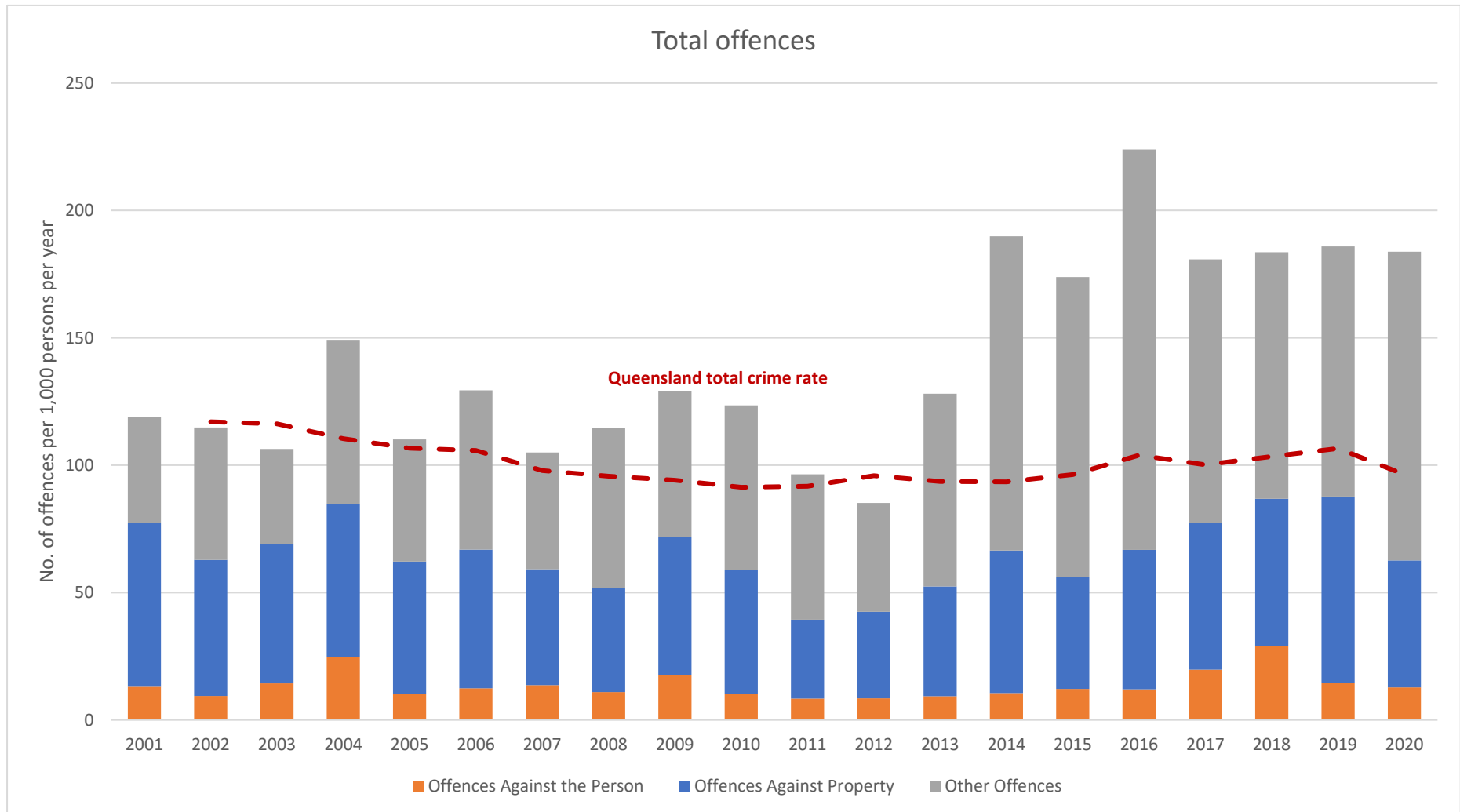
UQ Research Project: Cumulative social and economic impacts of CSG development in Western Downs



Data notes

- Source: Queensland Police Service (QPS), <https://www.police.qld.gov.au/online/data/>
- Crime rate data (per 100,000 people) obtained by QPS Division and Queensland State; data was adjusted to be presented as number of offences per 1,000 people per year

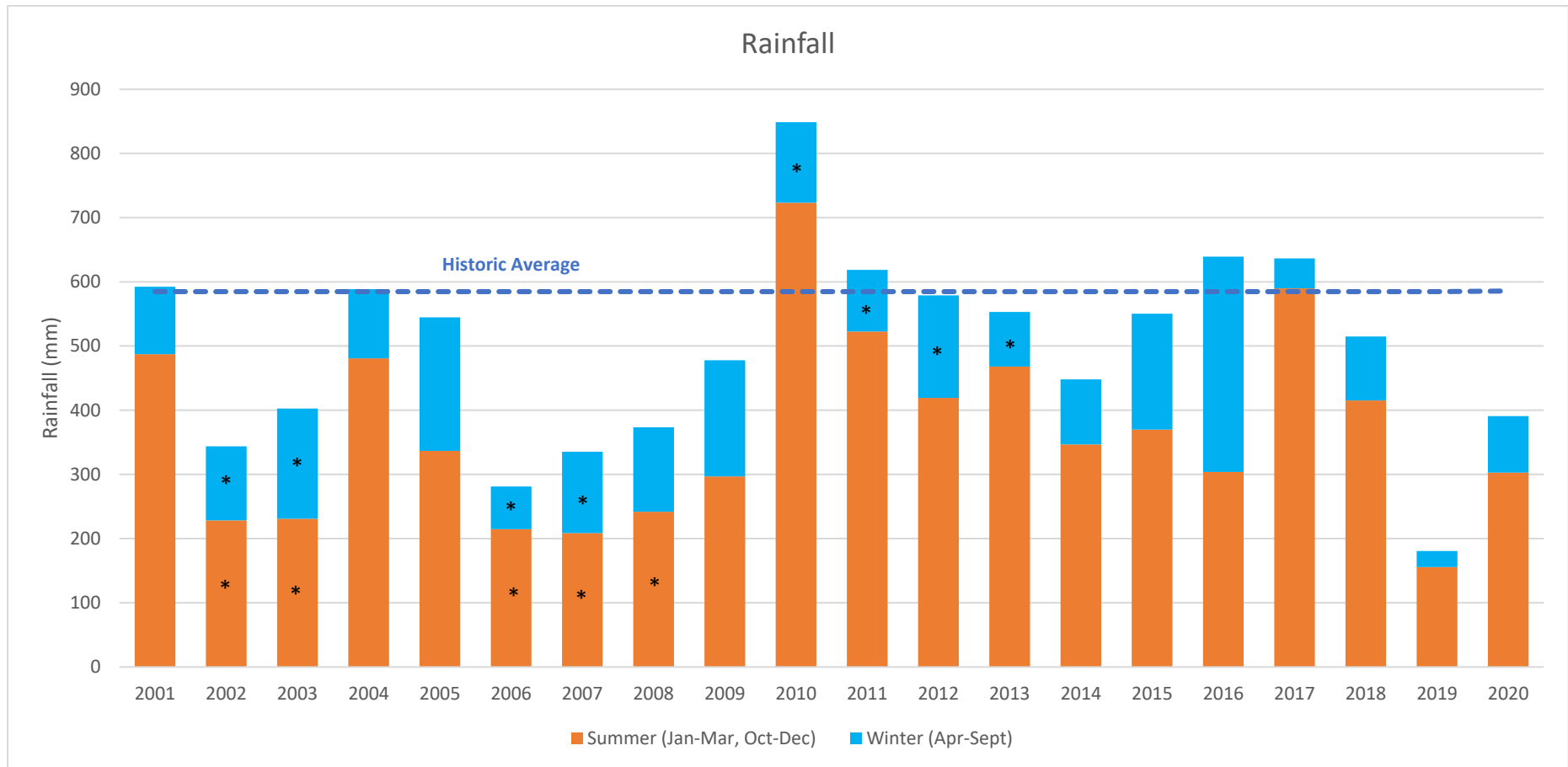
UQ Research Project: Cumulative social and economic impacts of CSG development in Western Downs



Data notes

- Source: Queensland Police Service (QPS), <https://www.police.qld.gov.au/online/data/>
- Crime rate data (per 100,000 people) obtained by QPS Division and Queensland State; data was adjusted to be presented as number of offences per 1,000 people per year

UQ Research Project: Cumulative social and economic impacts of CSG development in Western Downs



Data notes

- Source: Bureau of Meteorology Climate Data online, <http://www.bom.gov.au/climate/data/>
- Rainfall observations are reported for Woodlea Weather Station
- Where missing data is indicated, gaps exist in daily rainfall observations